

1.cartographer介绍

无需过多介绍，大名鼎鼎google开源的slam算法

2.硬件需求

先贴段官方的

```
64-bit, modern CPU (e.g. 3rd generation i7)
16 GB RAM
Ubuntu 14.04 (Trusty) and 16.04 (Xenial)
gcc version 4.8.4 and 5.4.0
```

当然越高端越好无论CPU和内存，经测试树莓派是没法玩了，测试了2款RK3399(Ubuntu16)设备可以跑起来

3.环境准备与编译

3.1安装依赖包

```
sudo apt-get install -y google-mock libboost-all-dev libeigen3-dev libgflags-dev
libgoogle-glog-dev liblua5.2-dev libprotobuf-dev libsuitesparse-dev libwebp-dev
ninja-build protobuf-compiler python-sphinx ros-kinetic-tf2-eigen libatlas-base-
dev libsuitesparse-dev liblapack-dev ros-kinetic-eigen-conversions
```

3.2编译

- 编译ceres-solver

```
cd pibot_ros
tar jxvf cartographer.tar.bz2
cd ~/pibot_ros/cartographer/ceres-solver-1.11.0/build
cmake ..
make -j4 # 这里如果出错（见下图），可以多次执行
sudo make install
```

```

chur_eliminator_2_3_3.cc.o' failed
make[2]: *** [internal/ceres/CMakeFiles/ceres.dir/generated/schur_eliminator_2_3_3.cc.o] Error 4
make[2]: *** Waiting for unfinished jobs...
c++: internal compiler error: Killed (program cclplus)
Please submit a full bug report,
with preprocessed source if appropriate.
See <file:///usr/share/doc/gcc-5/README.Bugs> for instructions.
internal/ceres/CMakeFiles/ceres.dir/build.make:2462: recipe for target 'internal/ceres/CMakeFiles/ceres.
chur_eliminator_4_4_2.cc.o' failed
make[2]: *** [internal/ceres/CMakeFiles/ceres.dir/generated/schur_eliminator_4_4_2.cc.o] Error 4
c++: internal compiler error: Killed (program cclplus)
Please submit a full bug report,
with preprocessed source if appropriate.
See <file:///usr/share/doc/gcc-5/README.Bugs> for instructions.
internal/ceres/CMakeFiles/ceres.dir/build.make:2918: recipe for target 'internal/ceres/CMakeFiles/ceres.
chur_eliminator_2_4_9.cc.o' failed
make[2]: *** [internal/ceres/CMakeFiles/ceres.dir/generated/schur_eliminator_2_4_9.cc.o] Error 4
c++: internal compiler error: Killed (program cclplus)
Please submit a full bug report,
with preprocessed source if appropriate.
See <file:///usr/share/doc/gcc-5/README.Bugs> for instructions.
internal/ceres/CMakeFiles/ceres.dir/build.make:2774: recipe for target 'internal/ceres/CMakeFiles/ceres.
artitioned_matrix_view_2_2_4.cc.o' failed
make[2]: *** [internal/ceres/CMakeFiles/ceres.dir/generated/partitioned_matrix_view_2_2_4.cc.o] Error 4

```

- 继续cartographer

```

cd ~/pibot_ros/cartographer/cartographer/build
cmake .. -G Ninja
ninja
ninja test
sudo ninja install

```

- 编译cartographer ros 包

```

cd ~/pibot_ros/cartographer/cartographer_ros
catkin_make

```

4.测试cartographer

cartographer不依赖里程计，所以不需要发出odom tf,这里我们启动robot_without_odom.launch

```

roslaunch pibot_bringup robot_without_odom.launch

```

这里包括了启动雷达

另外一个终端

```

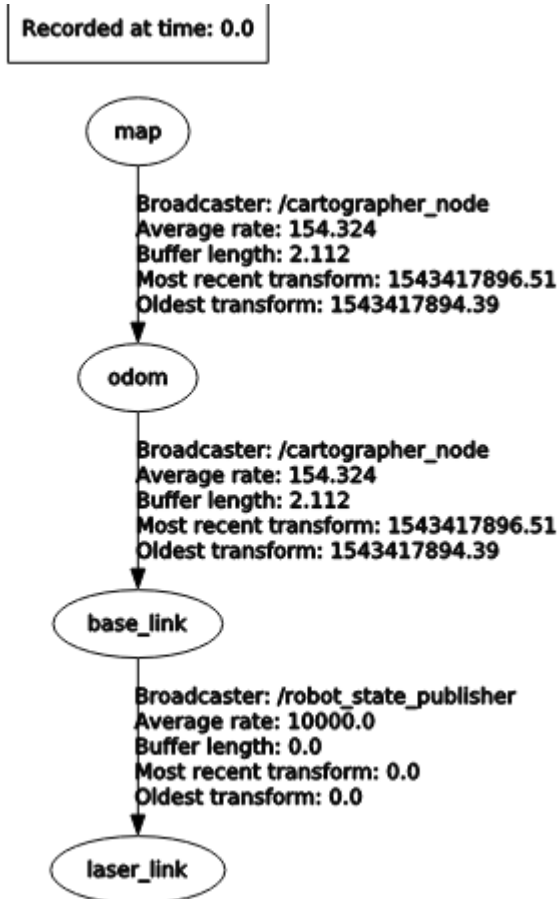
source ~/pibot_ros/cartographer/cartographer_ros/devel/setup.bash
roslaunch pibot_navigation cartographer.launch

```

另外一个终端，通过控制小车就可以cartographer建图了

```
roslaunch pibot keyboard.launch
```

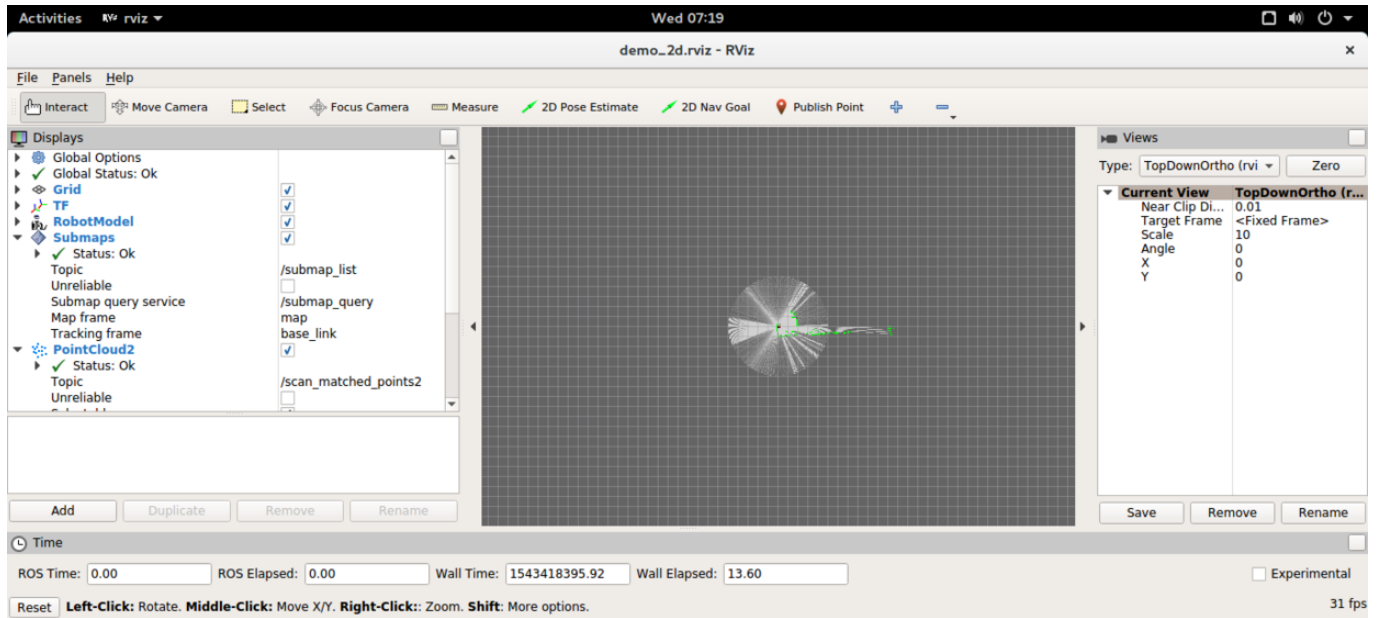
我们先看下tf tree,虚拟机中rosrun rqt_tf_tree rqt_tf_tree可以看到一幅支持的tf tree了



5.查看建图

可是说好的建图的，图呢，没图说个jb.jpg,同样我们在rviz显示建图结果

```
roslaunch pibot_navigation view_cartographer.launch
```



6.疑问

对于4.测试cartographer中有的同学要问为什么不把这个2个写到一个launch,这个问题问的好, 博主试着写到一起, 启动不正常, 还不知道具体原因, 有兴趣的可以一起探讨

附上之前的launch文件

```
<launch>
  <include file="$(find pibot_bringup)/launch/robot_without_odom.launch"/>
  <include file="$(find cartographer_ros)/launch/lidar_2d.launch"/>
</launch>
```